

## Anti-CDH17 hlgG1 Antibody(VHHI-28BB)

### 产品信息

GM-75321AB-10	10 µg
GM-75321AB-100	100 µg
GM-75321AB-1000	1 mg

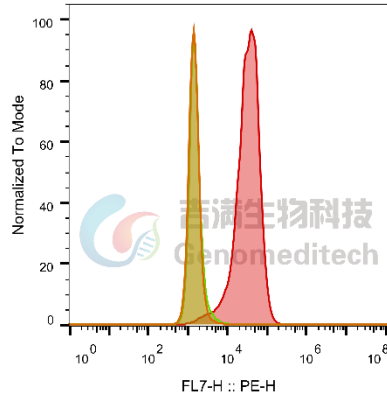
### 抗体信息

Species Reactivity	Mouse; Rat
Clone	VHHI-28BB
Source/Isotype	Monoclonal human IgG1, VHH
Application	Flow cytometry
Specificity	Detects CDH17
Gene	CDH17
Other Names	HPT-1; HPT-1/LI
Gene ID	12557 (Mouse), 117048 (Rat)
Background	This gene is a member of the cadherin superfamily, genes encoding calcium-dependent, membrane-associated glycoproteins. The encoded protein is cadherin-like, consisting of an extracellular region, containing 7 cadherin domains, and a transmembrane region but lacking the conserved cytoplasmic domain. The protein is a component of the gastrointestinal tract and pancreatic ducts.
Storage	Store at 2-8°C short term (1-2 weeks).Store at ≤ -20°C long term.Avoid repeated freeze-thaw.
Formulation	Phosphate-buffered solution, pH 7.2.
Endotoxin	< 1 EU/mg, determined by LAL gel clotting assay

## Data Examples

### Flow cytometry

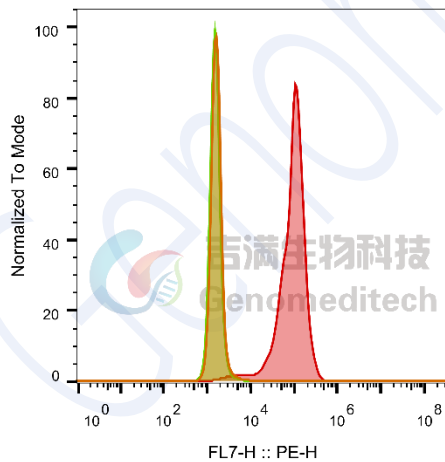
The recommended usage range is 0.5-4  $\mu$ g per test. Mouse\_CDH17 HEK-293 Cell Line (Catalog # GM-C26466) was stained with Anti-CDH17 hIgG1 Antibody (Catalog # GM-75321AB) or isotype control antibody, followed by anti-Human IgG PE-conjugated Secondary Antibody.



SampleID	Geometric Mean : FL7-H
HEK-293 Anti-CDH17+PE-2nd Ab	1462
HEK-293 Mouse_CDH17 H_IgG+PE-2nd Ab	1576
HEK-293 Mouse_CDH17 Anti-CDH17+PE-2nd Ab	30902

### Flow cytometry

The recommended usage range is 0.5-4  $\mu$ g per test. Rat\_CDH17 HEK-293 Cell Line (Catalog # GM-C26465) was stained with Anti-CDH17 hIgG1 Antibody (Catalog # GM-75321AB) or isotype control antibody, followed by anti-Human IgG PE-conjugated Secondary Antibody.



SampleID	Geometric Mean : FL7-H
HEK-293 Anti-CDH17+PE-2nd Ab	1660
HEK-293 Rat_CDH17 H_IgG+PE-2nd Ab	1555
HEK-293 Rat_CDH17 Anti-CDH17+PE-2nd Ab	86025

Fig. 流式验证结果